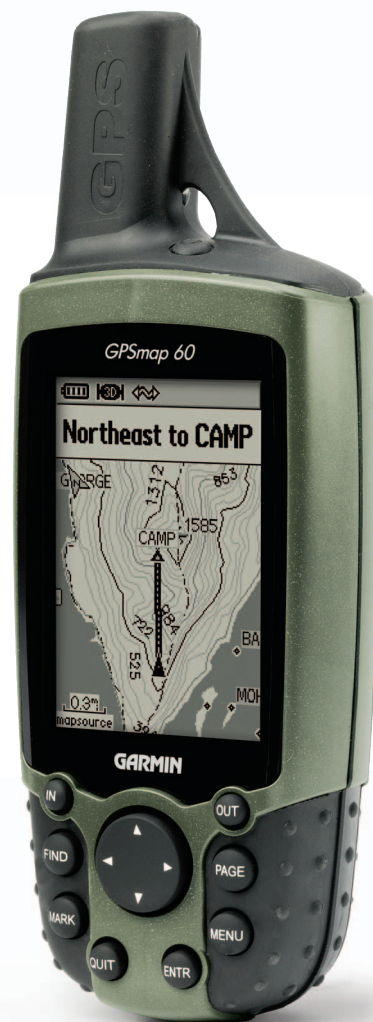


On trailways, highways or waterways,
Garmin's new GPSMAP® 60 series is a

Get a grip on your sense of adventure

great way to get directions. Rugged,
waterproof, and as extra-precise as
WAAS can make it, this affordable GPS
handheld features a crisp, 4-level
grayscale display and built-in basemap.

There's memory for up to 24 MB of
optional MapSource® topo, marine or
city map downloads (via USB and/or Ser-
ial port connections), so you can
easily navigate anywhere in the great
outdoors. A handy TracBack® function
creates a "virtual breadcrumb"
trail – guiding you back to any point
along your route. And special
geocaching and geolocation gaming
modes provide entertainment, as well as
trailblazing navigation capability





Navigation features

- Waypoints/icons:** 1000 with name and graphic symbol, 10 nearest (automatic), 10 proximity
- Routes:** 50 reversible routes with up to 250 points each, plus MOB and TracBack® modes
- Tracks:** 10K point automatic track log; 20 saved tracks 500 points each let you retrace your path in both directions
- Trip computer:** Current speed, average speed, resettable max. speed, trip timer and trip distance
- Alarm clock:** Anchor drag, approach and arrival, off-course, proximity waypoint, shallow water and deep water
- Tables:** Built-in celestial tables for best times to fish and hunt, sun and moon rise, set and location
- Map datums:** More than 100 plus user datum
- Position format:** Lat/Lon, UTM/UPS, Maidenhead, MGRS, Loran TDs and other grids, including user grid

GPS performance

- Receiver:** WAAS enabled, 12 parallel channel GPS receiver continuously tracks and uses up to 12 satellites to compute and update your position
- Acquisition times:**
 - Warm:** Approximately 15 seconds
 - Cold:** Approximately 45 seconds
 - AutoLocate™:** Approximately 5 minutes
- Update rate:** 1/second, continuous
- GPS accuracy:**
 - Position:** < 15 meters, 95% typical*
 - Velocity:** 0.05 meter/sec steady state
- DGPS (USCG) accuracy:**
 - Position:** 3-5 meters, 95% typical
 - Velocity:** 0.05 meter/sec steady state
- DGPS (WAAS) accuracy:**
 - Position:** < 3 meters, 95% typical
 - Velocity:** 0.05 meter/sec steady state

- Dynamics:** 6 g's
- Interfaces:** USB, RS232 with NMEA 0183, RTCM 104 DGPS data format and proprietary Garmin
- Antenna:** Built-in quadrifilar, with external antenna connection (MCX)
- Differential:** DGPS, USCG and WAAS capable

Moving map features

- Basemap:** Built-in routable Americas Recreational or Atlantic Recreational or Pacific Recreational basemap with cities, highways, interstates, exit info, rivers, lakes; preloaded with worldwide cities

- Uploadable maps:** Accepts up to 24 megabytes of downloaded map detail from a variety of optional MapSource CDs**

Power

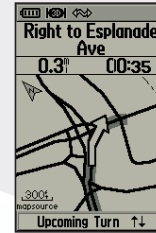
- Source:** Two "AA" batteries (not included)
- Battery life:** Up to 28 hours

Physical

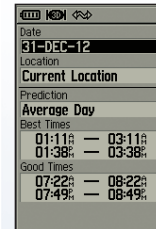
- Size:** 2.4" W x 6.1" H x 1.3" D inches (61mm x 155mm x 33mm)
- Weight:** 5.4 oz. (153 g) est.
- Display:** 1.5 x 2.2 inches (38mm x 56mm) High-resolution, FSTN (160 x 240 pixels)
- Case:** Waterproof to IPX-7 standards
- Temp. range:** 5°F to 158°F (-15°C to 70°C)

Accessories

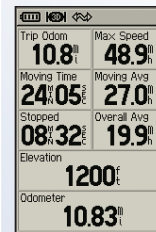
- Standard:** PC/USB interface cable
Belt clip
Owner's manual
Quick reference guide
Wrist strap
- Optional:** Automotive Navigation Kit (includes City Select®)
Automotive mount
Marine mount
Suction cup mount
Carrying case
12-volt adapter cable
Power/data cable
Remote GPS antenna
MapSource™ CD-ROMs
Instructional video



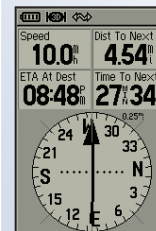
Optional MapSource® detailed City Select®¹



Hunt and fish calendars



Trip computer



Compass page

GPSMAP 60



©2003 Garmin Ltd. or its subsidiaries



Garmin International Inc.
1200 East 151st Street
Olathe, Kansas 66062, U.S.A.
913/397.8200 fax 913/397.8282

Garmin (Europe) Ltd.
Unit 5, The Quadrangle
Abbey Park Industrial Estate
Romsey, SO51 9DL, U.K.
44/1794.519944 fax 44/1794.519222

Garmin Corporation
No. 68, Jangshu 2nd Rd.
Shijr, Taipei County, Taiwan
886/2.2642.9199 fax 886/2.2642.9099

www.garmin.com

Specifications are preliminary and subject to change without notice.

* Subject to accuracy degradation to 100m 2DRMS under the U.S. Department of Defense imposed Selective Availability Program.

** These units are also able to transfer waypoints, routes and tracks between the PC and GPS using MapSource.™